

SPECIFICATIONS

FUNCTION:
1P1T OFF-ON

RATINGS:
UL 1054
20A 125VAC [cURus]
16A 250VAC [cURus]
3/4HP 125/250VAC [cURus]

ENEC/VDE
16(4)A 250V~ 1E4 T85/55 [ENEC10, VDE]
10(2)A 250V~ 5E4 T85/55 [ENEC10, VDE]
20(8)A 250V~ 1E4 T125/55 [ENEC10, VDE]

ILLUMINATION VOLTAGE:
12V

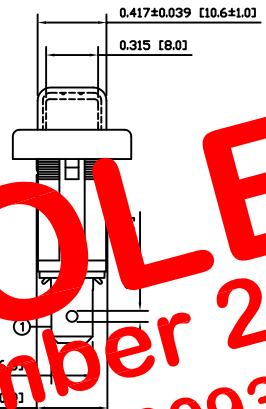
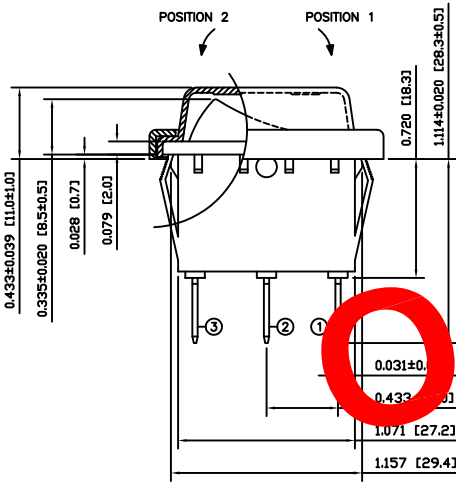
CONTACT RESISTANCE:
Initial: 20mΩ Max.

INSULATION RESISTANCE:
100MΩ Min. at 500VDC

DIELECTRIC STRENGTH:
1,000VAC for 1 Minute

ELECTRICAL LIFE:
6,000 Cycles [cURus]
10,000 Cycles [ENEC10, VDE: 16(4)A 250V~]
50,000 Cycles [ENEC10, VDE: 10(2)A 250V~]

TEMPERATURE:
Operating: -20°C to 65°C [cURus]
Operating: -20°C to 125°C [ENEC10, VDE]
Operating: -20°C to 85°C [ENEC10, VDE]



OBSOLETE
November 2017
PCR 23093



COLORS AND MARKINGS

BODY:
Black

ACTUATOR:
Transparent Green

MARKINGS:
None

MARKING COLOR:
None

FRAME:
Black

MATERIALS

BODY:
Polyamide 6/6 (PA66), UL94 V-2

ACTUATOR:
Polycarbonate (PC), UL94 V-2

LAMP CARRIER:
Polyamide 6/6 (PA66), UL94 V-2

LAMP:
LED

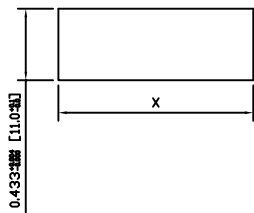
LAMP SPRING:
Steel

SPRING:
Steel

CONTACTS:
Silver Plated Copper

TERMINALS:
Silver Plated Copper
Silver Plated Brass

SUGGESTED PANEL CUTOUT



PANEL THICKNESS		X
0.030~0.049	[0.75~1.25]	1.189 [30.2]
0.049~0.079	[1.25~2.00]	1.201 [30.5]

ACTUATOR	A	09/07/06	CAB
BODY	A	09/07/06	CAB
COLORS	A	10/02/19	CAB
SPECIFICATIONS			
REFERENCE	REV.	DATE	BY

THE INFORMATION CONTAINED IN THIS DOCUMENT IS PROPRIETARY TO E-SWITCH AND IS NOT TO BE COPIED OR TRANSFERRED

B	LAMP FROM INCAND. BULB TO LED, UPDATE SCHEM. AND SPEC.	21826	6/15/2015	MW
A <td>INITIAL RELEASE <td>18992 <td>10/02/19 <td>CAB </td></td></td></td>	INITIAL RELEASE <td>18992 <td>10/02/19 <td>CAB </td></td></td>	18992 <td>10/02/19 <td>CAB </td></td>	10/02/19 <td>CAB </td>	CAB
REV. <td>DESCRIPTION <td>PCR <td>DATE <td>DRAWN BY </td></td></td></td>	DESCRIPTION <td>PCR <td>DATE <td>DRAWN BY </td></td></td>	PCR <td>DATE <td>DRAWN BY </td></td>	DATE <td>DRAWN BY </td>	DRAWN BY

DIMENSIONS	
INCHES [MILLIMETERS]	
GENERAL TOLERANCES	
±0.008 [±0.2] / ±1'	
SCALE	PROJECTION
DRAWING NOT TO SCALE	1st Angle

E-SWITCH | **LAMB INDUSTRIES**

TITLE: RB141D1000-134/ACC-F01-1

ITEM NUMBER: 14-RB1S00036 | DATE: FEBRUARY 19, 2010 | REVISION: B